

# YVES SAINT LAURENT THE RETROSPECTIVE

March 25–July 8, 2012

Fondation  
PIERRE BERGÉ  
YVES SAINT LAURENT

DENVER  
ART MUSEUM

100 W 14th Ave Pkwy  
Denver, CO 80204-2788

www.denverartmuseum.org

## Yves Saint Laurent: The Retrospective Image Highlights and Credit Lines



Yves Saint Laurent for Dior, Short evening dress, "Trapeze" haute couture collection, Spring-Summer 1958, *Valse* (Waltz) design. White silver-sequined tulle. © Fondation Pierre Bergé-Yves Saint Laurent, Paris / Photo A. Guirkingner.



Yves Saint Laurent, Short evening ensemble, haute couture collection, Fall-Winter 1990. Black ribbed jersey tunic; black embossed leather skirt. © Fondation Pierre Bergé-Yves Saint Laurent, Paris / Photo A. Guirkingner.



Yves Saint Laurent, Jumpsuit, haute couture collection, Fall-Winter 1969. Bordeaux wool jersey. © Fondation Pierre Bergé-Yves Saint Laurent, Paris / Photo A. Guirkingner.



Yves Saint Laurent, Long evening dress, haute couture collection, Fall-Winter 1990. Black sequined lace, pink satin ribbon bows. © Fondation Pierre Bergé-Yves Saint Laurent, Paris / Photo A. Guirkingner.



Yves Saint Laurent, Belle de Jour dress, haute couture collection, Spring-Summer 1967. Baratheia, black-and-white silk satin collar and cuffs. © Fondation Pierre Bergé-Yves Saint Laurent, Paris / Photo A. Guirkingner.



Yves Saint Laurent, Short evening coat, haute couture collection, Spring-Summer 1971. Green fox fur. © Fondation Pierre Bergé-Yves Saint Laurent, Paris / Photo A. Guirkingner.



Yves Saint Laurent, Torero ensemble, haute couture collection, Fall-Winter 1979. Pink lamé bolero and knickerbockers; bright pink satin and taffeta blouse. © Fondation Pierre Bergé-Yves Saint Laurent, Paris / Photo A. Guirkingner.



Yves Saint Laurent, Long evening ensemble, haute couture collection, Fall-Winter 1976. Emerald and sable velvet bolero; peacock blue-and-gold chiffon; Prussian blue Ottoman skirt. © Fondation Pierre Bergé-Yves Saint Laurent, Paris / Photo A. Guirkingner.



Yves Saint Laurent, Long evening dress, Rive Gauche collection, Fall-Winter 1991. Draped gold lamé. © Fondation Pierre Bergé-Yves Saint Laurent, Paris / Photo A. Guirkingner.



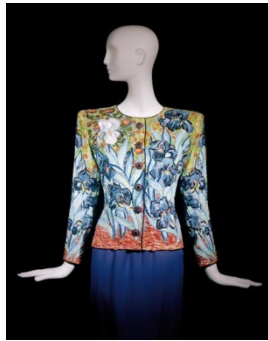
Yves Saint Laurent, Long evening dress, "Bambara" haute couture collection, Spring-Summer 1967. Black Rhodoïd and wooden bead embroidery. © Fondation Pierre Bergé-Yves Saint Laurent, Paris / Photo A. Guirkinger.



Yves Saint Laurent, Long evening dress, tribute to Tom Wesselmann, haute couture collection, Fall-Winter 1966. Navy blue wool jersey, encrusted "silhouette" motif. © Fondation Pierre Bergé-Yves Saint Laurent, Paris / Photo A. Guirkinger.



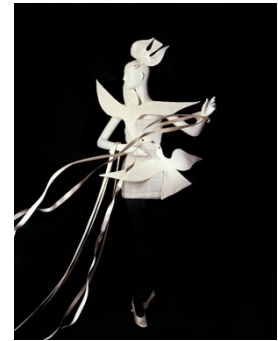
Yves Saint Laurent, Short cocktail dress, tribute to Tom Wesselmann, haute couture collection, Fall-Winter 1966. Purple-and-black wool jersey, encrusted "face" motif. © Fondation Pierre Bergé-Yves Saint Laurent, Paris / Photo A. Guirkinger.



Yves Saint Laurent, Short evening ensemble, tribute to Vincent Van Gogh, haute couture collection, Spring-Summer 1988. Jacket embroidered with sequins and pearls; green crepe blouse; purple crepe skirt. © Fondation Pierre Bergé-Yves Saint Laurent, Paris / Photo A. Guirkinger.



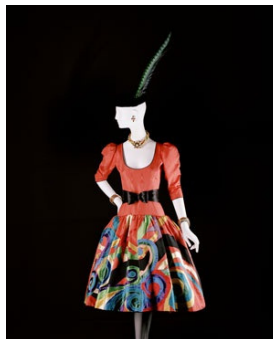
Yves Saint Laurent, Long evening dress, inspired by Henri Matisse, haute couture collection, Fall-Winter 1980. Black velvet and moiré faille, multicolored satin appliqué leaves. © Fondation Pierre Bergé-Yves Saint Laurent, Paris / Photo A. Guirkinger.



Yves Saint Laurent, Wedding dress, tribute to Georges Braque, haute couture collection, Spring-Summer 1988. White tulle, white cotton pique appliqué "doves." © Fondation Pierre Bergé-Yves Saint Laurent, Paris / Photo A. Guirkinger.



Yves Saint Laurent, Long evening ensemble, tribute to Georges Braque, haute couture collection, Spring-Summer 1988. Embroidered white gazar Cubist cape; white crepe dress. © Fondation Pierre Bergé-Yves Saint Laurent, Paris / Photo A. Guirkinger.



Yves Saint Laurent, Short evening dress, tribute to Pablo Picasso, haute couture collection, Fall-Winter 1979. Black velvet and orange moiré, multicolored appliqué patchwork. © Fondation Pierre Bergé-Yves Saint Laurent, Paris / Photo A. Guirkinger.



Yves Saint Laurent, Short cocktail dress, tribute to Piet Mondrian, haute couture collection, Fall-Winter 1965. Ecru wool jersey, encrusted with black, red, yellow and blue. © Fondation Pierre Bergé-Yves Saint Laurent, Paris / Photo A. Guirkinger.



Yves Saint Laurent, Long evening ensemble, haute couture collection, Fall-Winter 1984. Domino coat in shades of blue faille and black velvet; black and pearly satin embroidered guipure lace dress. © Fondation Pierre Bergé-Yves Saint Laurent, Paris / Photo A. Guirkinger.



Yves Saint Laurent, Long evening dress, "Paris" haute couture collection, Fall-Winter 1983. Black velvet sheath dress, "Paris rose" satin bow. © Fondation Pierre Bergé-Yves Saint Laurent, Paris / Photo A. Guirkinger.



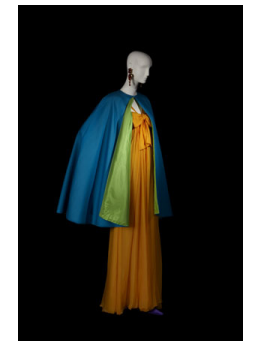
Yves Saint Laurent, Long evening ensemble, haute couture collection, Fall-Winter 1983. Domino coat in yellow faille de chine; velvet sheath dress with black lace. © Fondation Pierre Bergé-Yves Saint Laurent, Paris / Photo A. Guirkinger.



Yves Saint Laurent, Tuxedo with pants, haute couture collection, Fall-Winter 1966. Black barathea and satin silk, white organdy blouse. © Fondation Pierre Bergé-Yves Saint Laurent, Paris / Photo A. Guirkinger.



Yves Saint Laurent, Tuxedo with short skirt, haute couture collection, Spring-Summer 1982. Black-and-white barathea spencer and skirt. © Fondation Pierre Bergé-Yves Saint Laurent, Paris / Photo A. Guirkinger.



Yves Saint Laurent, Long evening dress, haute couture collection, Spring-Summer 2002. Yellow draped chiffon; blue gazer cape lined with green silk. © Fondation Pierre Bergé-Yves Saint Laurent, Paris / Photo A. Guirkinger.



Yves Saint Laurent, Black velvet sheath dress, "Paris rose" satin bow, "Paris" haute couture collection, Fall-Winter 1983. © Fondation Pierre Bergé-Yves Saint Laurent, Paris. Photo by Gilles Tapie.

###