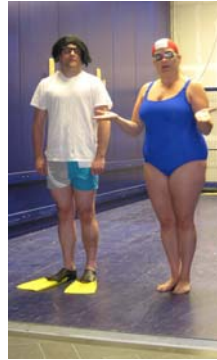


## **Denver Art Museum Exhibitions and Programs**

### **September 2009 – August 2010**




---

#### **UPCOMING EXHIBITIONS**

**Pages 2-3**

<i>Shape &amp; Spirit: Selections from the Lutz Bamboo Collection</i>	September 26, 2009 – September 19, 2010
<i>Allen True's West</i>	October 2, 2009 – March 28, 2010
<i>The Masterworks of Charles M. Russell: A Retrospective of Paintings and Sculpture</i>	October 17, 2009 – January 10, 2010
<i>Embrace!</i>	November 14, 2009 – April 4, 2010
<i>Tutankhamun: The Golden King and the Great Pharaohs</i>	July 1, 2010 – January 2, 2011
<i>Charles Deas and 1840s America</i>	August 21, 2010 – November 28, 2010

---

#### **CONTINUING EXHIBITIONS**

**Page 4**

<i>Drawings, Anyone? Recent Acquisitions from the Eleanor and Henry Hitchcock Foundation</i>	Ongoing
<i>Fritz Scholder: A New Indian Image</i>	Through May 30, 2010
<i>A Visual Alphabet: Herbert Bayer's Anthology Paintings</i>	Through December 2010

---

#### **PROGRAMS FOR CHILDREN AND FAMILIES**

**Pages 4-5**

---

#### **ADULT PROGRAMS AND TOURS**

**Pages 5-6**

---

#### **VISITOR INFORMATION**

**Page 6**

**This exhibition and events calendar is current as of September 2009.**

Please confirm dates and titles with the Museum's Communications Office before publication at 720-913-0000 or [pressoffice@denverartmuseum.org](mailto:pressoffice@denverartmuseum.org), as information provided here is subject to change. Contact the Communications Office for more information, exhibition sponsor information, or images.

**Contact number for use in text is 720-865-5000.**

Visit our online press office at <http://www.denverartmuseum.org/pressoffice>

*Follow DAM on Twitter and Facebook. Search for Denver Art Museum and Untitled.*

## UPCOMING EXHIBITIONS



### ***Shape & Spirit: Selections from the Lutz Bamboo Collection*** **September 26, 2009 – September 19, 2010**

The inaugural exhibition in the Walter + Mona Lutz Gallery, *Shape & Spirit* highlights artworks made of bamboo from China, Japan and Korea. Comprised of more than 200 objects chosen from the Lutz Bamboo Collection, this exhibition represents the variety of ways in which bamboo was shaped into objects that capture the spirit and cultural character of their makers. Woven baskets, carved figures and cleverly devised implements are among the bamboo articles displayed in the Bamboo Gallery, a space within the Asian art galleries that is specifically designated for bamboo objects from East Asia.



### ***Allen True's West*** **October 2, 2009 – March 28, 2010**

This three-part exhibition featuring the work of Colorado artist Allen Tupper True (1881-1955) is presented by the Denver Art Museum's (DAM) Petrie Institute of Western American Art, in concert with the Denver Public Library's Western History and Genealogy Department (DPL) and the Colorado Historical Society (CHS). Regarded as Colorado's premier native-born artist of the early 20th century, True's long and distinguished artistic career included three distinct phases — as an illustrator, an easel painter and finally as a muralist. The DAM's portion of the exhibition will highlight the middle phase of his work as an easel painter, featuring 13 oil paintings that reveal his stylistic development over a decade of work as a fine artist. Considered technically advanced for his years, True's art, according to one authority, was unique, possessed of a "freedom and happy abandon rarely seen in American art."

The DPL will focus its segment on his illustrations, while the CHS portion will examine True's work as a muralist.

*Allen True's West* is presented by the Denver Art Museum in association with the Colorado Historical Society and the Denver Public Library. This exhibition is sponsored by the True Foundation. Additional support has been provided by the JFM Foundation, Edith Marbut, Tom and Jane Petrie, Raymond and Sally Duncan, Crimson Resource Management, Leptas Foundation, Rob and Julie Lewis, Redd Foundation, David Cook Fine Arts Galleries, Bruce and Dorothy Dines, Jim and Lucy Wallace, Alan and Carol Ann Olson, Joan True McKibben, Mr. and Mrs. Will F. Nicholson Jr. and Mr. and Mrs. Barton M. Johnson. We also recognize the generosity of the citizens who support the Scientific and Cultural Facilities District and the donors to the Annual Fund Leadership Campaign.



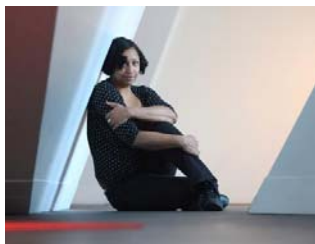
### ***The Masterworks of Charles M. Russell: A Retrospective of Paintings and Sculpture***

**October 17, 2009 – January 10, 2010**

*The Masterworks of Charles M. Russell: A Retrospective of Paintings and Sculpture*, jointly organized by the Denver Art Museum and Gilcrease Museum, is the first major retrospective of Russell's most important paintings and sculptures. The exhibition will include 60 major works in oil, bronze and mixed media as well as a selection of objects that portray the charismatic artist in his own words and images.

A book covering the full span of Russell's career will be published in conjunction with the exhibition by the University of Oklahoma Press. After debuting at the DAM, the exhibition will travel to Gilcrease Museum and the Museum of Fine Arts, Houston.

*The Masterworks of Charles M. Russell: A Retrospective of Paintings and Sculpture* is organized collaboratively by the Denver Art Museum and Gilcrease Museum. Wells Fargo is the local presenting sponsor, with significant support provided by the Helen K. and Arthur E. Johnson Foundation. This exhibition is also supported by an indemnity from the Federal Council on the Arts and the Humanities. Additional funding is provided by The Adolph Coors Foundation Exhibition Fund, Sotheby's, Mr. and Mrs. Thomas A. Petrie, Fine Arts Foundation, the citizens who support the Scientific and Cultural Facilities District and the generous donors to the Annual Fund Leadership Campaign. Promotional support is provided by *The Denver Post*, *CBS4* and *5280 Magazine*.



### ***Embrace!***

**November 14, 2009 – April 4, 2010**

*Embrace!* is a collaboration with contemporary artists that explores the many possibilities of the non-traditional spaces in the Museum's Hamilton Building. This unique exhibition demonstrates how painting leaves the wall and embraces space. Seventeen artists have selected spaces that take advantage of the building in innovative and challenging ways. Curated by Christoph Heinrich, deputy director and the Polly and Mark Addison curator of modern and contemporary art, *Embrace!* is sure to be a surprising and enthusiastic celebration of painting and architecture.



Contemporary artists from around the world including Shinique Smith and Rupprecht Matthies (pictured) will create site-specific works for *Embrace!* Other participants include El Anatsui, Kristin Baker, Matthew Brannon, Rick Dula, Katharina Grosse, Christian Hahn, Nicola López, John McEnroe, Tobias Rehberger, Charles Sandison, Dasha Shishkin, Jessica Stockholder, Timothy Weaver + eMAD, Lawrence Weiner and Zhong Biao.

*Embrace!* is organized by the Denver Art Museum. A special thank you to Vicki and Kent Logan and to the individual patrons of *Embrace!* who have sponsored the work of these artists. Support is provided by U.S. Bank and Accenture, the Denver Art Museum's Technology Partner. Additional funding is provided by Avande Inc., the citizens who support the Scientific and Cultural Facilities District, the generous donors to the Annual Fund Leadership Campaign, the LEF Foundation, and the John G. Duncan Charitable Trust. Promotional support is provided by *The Denver Post*, CBS4 and *5280 Magazine*.



### ***Tutankhamun: The Golden King and the Great Pharaohs***

**July 1, 2010 – January 2, 2011**

*Tutankhamun: The Golden King and the Great Pharaohs* is a once-in-a-lifetime exhibition at the Denver Art Museum featuring more than 100 pieces from the tomb of the celebrated King Tutankhamun, the last king of Egypt's most powerful family who mysteriously died at a young age. The show also features striking objects from ancient sites, representing some of the most important rulers throughout 2,000 years of Egyptian history, from the 4th Dynasty into the Late Period (about 2600 B.C. to 660 B.C.) Derived from a variety of contexts, including temples and royal and private tombs, many of these artifacts were never before seen in the United States until this exhibition. The Denver Art Museum is the only venue in the Rocky Mountain West to experience this incredible show.

Tickets for the Denver run of *Tutankhamun: The Golden King and the Great Pharaohs* will go on sale in spring 2010. A portion of proceeds from the tour will go toward antiquities preservation and conservation efforts in Egypt, including the construction of a new grand museum in Cairo.

The exhibition is organized by National Geographic, Arts and Exhibitions International and AEG Exhibitions, with cooperation from the Egyptian Supreme Council of Antiquities.



### ***Charles Deas and 1840s America***

**August 21, 2010 – November 28, 2010**

*Charles Deas and 1840s America* will highlight Charles Deas, one of the best known and highly appreciated artists of the American West during the 1840s. This exhibition — the first retrospective of the artist's work — will include over 45 paintings and works on paper, including Denver's *Long Jakes*, "*the Rocky Mountain Man*," Deas' depiction of an 1840s American trapper. This exhibition of Deas' works will illustrate how the artist helped shape Americans' understanding of themselves and their country during the pre-Mexican War era.

*Charles Deas and 1840s America* is organized by the Denver Art Museum. Wells Fargo is the presenting sponsor. Significant support is provided by the Henry Luce Foundation, Mrs. J. Maxwell Moran, Ranney R. Moran, the Blue Sky Foundation, the citizens who support the Scientific and Cultural Facilities District and the generous donors to the Annual Fund Leadership Campaign. Promotional support is provided by *The Denver Post*.

## CONTINUING EXHIBITIONS



### ***Drawings, Anyone? Recent Acquisitions from the Eleanor and Henry Hitchcock Foundation***

#### **Ongoing**

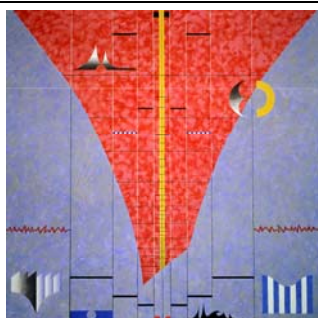
This selection of contemporary drawings has been acquired by the Museum over the last two years through the generosity of the Eleanor and Henry Hitchcock Foundation. This collaboration supports the Modern and Contemporary Department's initiative to develop and enhance a drawing collection that surveys the wide-ranging techniques of a diverse group of artists. *Drawings, Anyone?* provides an opportunity to study new explorations in this traditional medium.



### ***Fritz Scholder: A New Indian Image***

#### **Through May 30, 2010**

This installation presents eleven thought-provoking works by the groundbreaking California Luiseño artist. One of the paintings on view, *Seated Indian with Rifle (after Remington)*, recently came to the Native Arts collection as a promised gift from Polly and Mark Addison. These works show Scholder's attempt to alter the image of American Indians in the 20th century, from his defiantly controversial Indians to a deceptively intimate self portrait.



### ***A Visual Alphabet: Herbert Bayer's Anthology Paintings***

#### **Through December 2010**

In the last decade of his rich, multifaceted career, Herbert Bayer came forward with the *anthologies*, an inventive new painting series. Begun in 1976, this spirited departure from his earlier mathematically and chromatically structured canvases produced a body of works featuring themes and symbols that he used throughout his life in all media. These very personal paintings reevaluate Bayer's treatment of geometry, as well as themes like geologic and atmospheric forces, nature and the cosmos, and symbols such as letters and gates.

## PROGRAMS FOR CHILDREN AND FAMILIES

### **Free First Saturdays**

#### **Sponsored by Target**

The Denver Art Museum offers free general admission on the first Saturday of the month. Visitors can enjoy all of the Museum's regular offerings for free, including the many galleries and exhibitions on view throughout the complex. The Museum is open from 10 a.m. to 5 p.m. on Saturday; distribution of free tickets begins at 10 a.m. Tickets are available on-site only and while supplies last. Free First Saturdays are sponsored by Target and made possible by the citizens who support the Scientific and Cultural Facilities District.

### **Daily during Museum hours**

Stop by the Museum anytime during general admission hours and find family activities on every floor: Eye Spy games, artmaking, dress up costumes, make-a-postcard, Western bingo, puzzles, an African music mixing station, Carlos the Conservation Tortoise and more. The hands-on art activity in our popular Kids Corner changes several times every year, so come back and find something new. Look for Seymour, our monkey mascot, popping up around the Museum wherever there's something for kids to do!

### ***Just for Fun Family Center***

The Just for Fun Family Center is a place where families can gather in a relaxed atmosphere to enjoy world-culture themed play stations. Kids can dress like an Egyptian animal, play a Japanese matching game or build a five-foot replica of a Maya stone carving.

### ***Create Playdates – second Wednesday of the month, September-December 2009***

Drop in with your little ones (ages 3–5) to meet up with other tots and their grown ups for artmaking, story time throughout the Museum and scavenger hunts in the galleries from 11 a.m. to 1 p.m. on the second Wednesday of the month. Upcoming themes this fall are October 14 – *Bang*, November 11 – *Blob* and December 9 – *Stomp*. Playdates are included with general admission, and no reservations are needed. For more information, call 720-913-0073 or email [rlevy@denverartmuseum.org](mailto:rlevy@denverartmuseum.org).

### **Weekends for families**

#### ***Family Backpacks and Art Tubes (daily in the summer, during spring, fall and winter Denver Public School breaks and on weekends year-round — Saturday 10 a.m.-4 p.m., Sunday noon-4 p.m.)***

Take a trek through the Museum with a Family Backpack! Each pack is filled with hands-on games and activities to lead you on different adventures through the galleries in both the North and Hamilton Buildings. Choose from various adventures, including two special backpacks for 3-, 4-, and 5-year-olds and two bilingual (English/Spanish) Backpacks — *Jaguars, Snakes and Birds* and *Jaws, Paws and Claws*. Backpacks are checked out free of charge with photo I.D. In a hurry? Families who have limited time will find a bite-sized art-making activity in our new Art Tubes.

#### ***Hotspots (Saturdays 10 a.m.-4 p.m.; Sunday hours begin in November 2009)***

Weave on a Navajo loom or create your own building. Hotspots, offering hands-on exploration, are available every Saturday. Two new Hotspots will debut in November. Look for the Hotspots sign or ask about locations at either Welcome Center.

## **ADULT PROGRAMS AND TOURS**

### ***Untitled***

#### **Final Friday of the month, April-September, 6-10 p.m.**

Many artists call their work “Untitled” so there’s nothing to limit how the viewer perceives it. Similarly, anything can happen at our series of *Untitled* events and visitors can make of it what they wish. From 6 to 10 p.m. on the final Friday of the month April through September, visitors can connect to the Museum’s artwork and to each other in unexpected ways. All *Untitled* events include offbeat encounters with art, unusual *detours*, music, a cash bar and a dose of the unexpected.

#### Upcoming Untitled themes:

September 25 - *Untitled #25 (Herd)*

*Untitled* events are taking a break. Look for offbeat programs throughout the winter. For more details and updates, visit [untitled.denverartmuseum.org](http://untitled.denverartmuseum.org).

### ***Adult Programs***

For the most up-to-date information on art courses, studio classes, lectures and more, please visit the Museum’s website at [www.denverartmuseum.org](http://www.denverartmuseum.org)

### ***Architecture and Collection Highlights Tours***

Two 45-minute tours are available every day the Museum is open. On an ***Architecture Tour***, explore highlights in the Hamilton Building such as Boettcher Canyon Walk, the Bartlit Sculpture Deck and views from the Duncan Pavilion. On a ***Collection Highlight Tour***, learn about highlights of the Denver Art Museum collection, including works in both the North and Hamilton Buildings.

**Architecture Tour:** Tues.-Sun. at 1 p.m.

**Collection Highlights Tour:** Tues.-Fri. at 11 a.m. (additional tour Fri. at 6 p.m.); Sat. & Sun. at 2 p.m.

### **Nooner Tours**

Wednesday & Friday, noon

Visitors can explore a different topic every week in a 30-minute tour. Upcoming topics are available on the Museum's website and at the welcome desk in both buildings.

### **School Tours**

The DAM offers a wide variety of tours for students in kindergarten through college. For more information, visit [www.denverartmuseum.org](http://www.denverartmuseum.org).

### **Special Request & Access Tours**

To schedule a private tour of Museum collections and special exhibitions (minimum of 10 people) or a guided tour in Spanish, call at least two weeks in advance: 720-865-5000 and press 0. Adaptive and interpretive services are available with one week's notice; email [access@denverartmuseum.org](mailto:access@denverartmuseum.org) or call 720-865-5000 and press 0.

## **VISITOR INFORMATION**

The Denver Art Museum is located in downtown Denver on 13th Avenue between Broadway and Bannock. The Museum is open Tuesday, Wednesday, Thursday and Saturday 10 a.m. to 5 p.m.; Friday 10 a.m. to 10 p.m.; Sunday noon to 5 p.m.; closed Mondays, July 4, Thanksgiving, Christmas and New Year's Day. Enter the Cultural Complex Garage from 12th Avenue just west of Broadway or check the DAM website for up-to-date parking information. For information in Spanish, call 720-913-0169. For ticket prices, general Museum information and registration, call 720-865-5000 or visit the Museum's website at [www.denverartmuseum.org](http://www.denverartmuseum.org). General admission is free on the first Saturday of each month. Free First Saturdays are sponsored by Target, and made possible by the citizens who support the Scientific and Cultural Facilities District.

### **IMAGE CREDIT LINES:**

Page 1 images (l-r): Museum visitors enjoying the sculpture deck on Friday night, the Museum's popular Family Backpacks, Buntport Theatre performers at *Untitled, Fox Games* (detail) by Sandy Skoglund, the North Building.

Hanging lantern, 1900s, Japan. Bamboo, glass. Denver Art Museum, Lutz Bamboo Collection, gift of Adelle Lutz and David Byrne. 2004.664

*A Wanderlust Memory*, 1912, Allen True. Oil on canvas. Denver Art Museum; funds from Helen Dill bequest, 1936.2

*When I Was A Kid*, 1905, Charles M. Russell. Watercolor, gouache on paper. Frederic G. and Ginger K. Renner Collection, Paradise Valley, Arizona.

Shinique Smith and Rupprecht Matthies in the Frederic C. Hamilton Building. Photos by Marc Piscotty; courtesy of the Denver Art Museum.

Tutankhamun shabti. Photograph © Sandro Vannini.

*Long Jakes, "the Rocky Mountain Man"*, 1844, Charles Deas. Oil on canvas. Jointly owned by the Denver Art Museum and the Anschutz Collection; purchased in memory of Bob Magness with funds from Collector's Choice 1999, Sharon Magness, Mr. & Mrs. William D. Hewit, Carl & Lisa Williams, Estelle Rae Wolf - Flowe Foundation and the T. Edward and Tullah Hanley Collection by exchange. 1998.241

*A Lizard with Some Flowers*, early 1990s, James Drake. Charcoal on paper. Denver Art Museum; Gift of the Eleanor and Henry Hitchcock Foundation. 2007.28

*Seated Indian with Rifle (after Remington)*, about 1976, Fritz Scholder. Promised gift of Polly and Mark Addison. © Estate of Fritz Scholder.

*anthology graph III*, 1981, Herbert Bayer. Acrylic on canvas. Herbert Bayer Collection and Archive, Denver Art Museum. Gift of Joella Bayer. 1987.543

###